

2012

BTP Technologies,
LLC



Dynamics GP Bank Rec with VELOCITY!

EASY E-BANK REC™ INSTALLATION GUIDE

Version 11.0 for Microsoft Dynamics GP

Table of Contents

System Requirements	3
New Installation of the Easy e-Bank Rec™ Software	4
Upgrade Installation of the Easy e-Bank Rec™ Software.....	12
Known Issues – FAQ	21
Implementation	22
Preparation for Training	24
Operational Checklist.....	26
Upgrades	26
Bank File Requirements	27
BAI File - Technical Considerations.....	28
Technical Considerations – What Happens at Installation	30
Latest Upgrade Notes.....	32

System Requirements

Easy e-Bank Rec™ will work with Microsoft Dynamics™ GP 7.5, 8.0, 9.0,10.0 and 2010 and is compatible with SQL 2000, SQL 2005 and SQL 2008. It will also work with databases that have enabled the binary sort.

The latest features are only available in versions 10.0 and 2010.

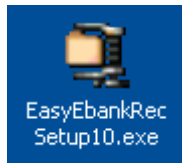
	Microsoft Dynamics GP 2010	Microsoft Dynamics GP 9.0 SP1, 10.0, 2010
Microsoft Windows XP Professional SP1a or SP2	Yes	Yes
Microsoft Windows 2000 SP3 or SP4	N/A	Yes
Microsoft Windows Server 2003	Yes	Yes
Microsoft Windows Server 2008 (32 and 64 bit)	Yes	Yes
Microsoft Windows Terminal Server 2003	Yes	Yes
Microsoft Windows Terminal Server 2008 (32 bit and 64 bit)	Yes	Yes
Microsoft SQL 2000	N/A	Yes
Microsoft SQL 2005	Yes	Yes
Microsoft SQL 2008 (32 bit and 64 bit)	Yes	Yes
Microsoft Excel	Yes	Yes
.NET Framework 2.0	Yes	Yes
Monitor: Super VGA; recommended 1024 x 768 screen resolution or higher	Yes	Yes

New Installation of the Easy e-Bank Rec™ Software

NOTE: Confirm this is a new installation of the client or client and server. Upgrades require different instructions (see Page 11).

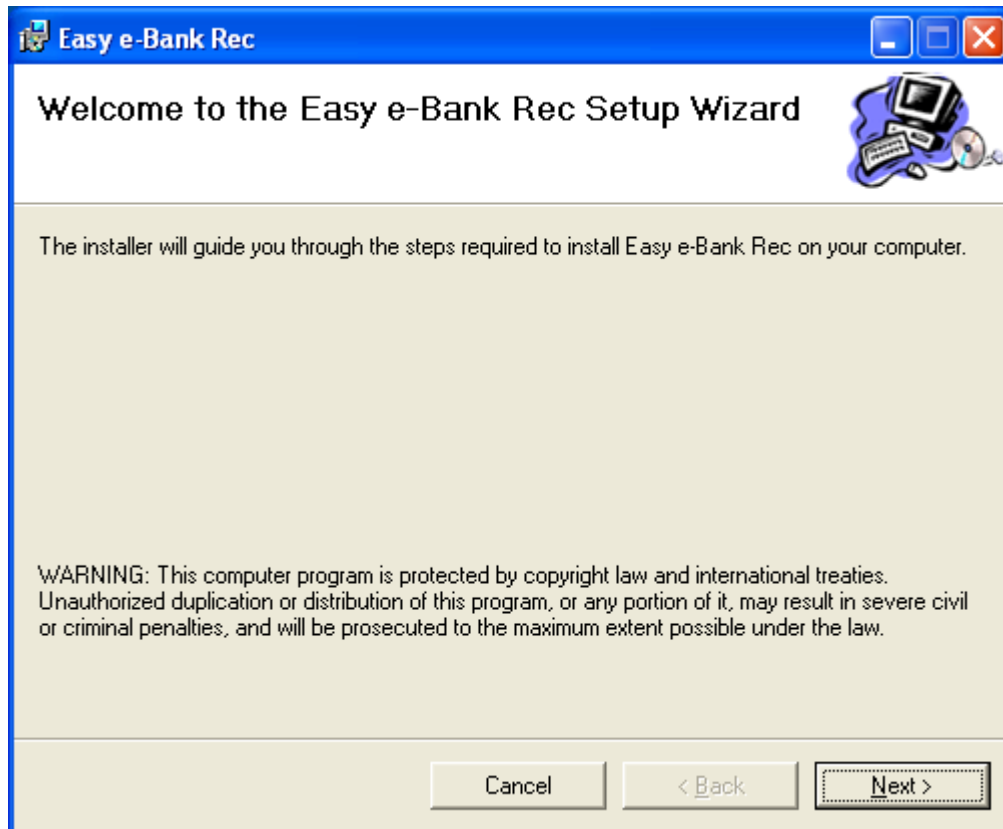
Easy e-Bank Rec™ is easy to install:

1. **[DOUBLE-CLICK]** on the <EASYEBANKREC SETUP11.EXE> icon:



BR Setup Icon

The folder will unzip automatically and the installation setup wizard will appear on the screen:



Setup Welcome Screen

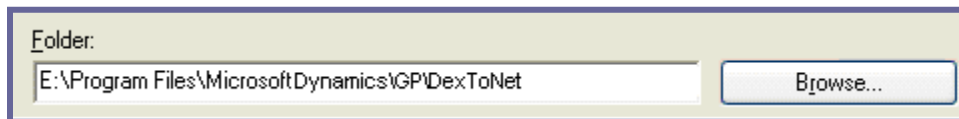
2. [CLICK] on <NEXT> to open the **License Agreement**.

NOTE: The **License Agreement** contains the terms and conditions for the use of Easy e-Bank Rec™. **Using the Easy e-Bank Rec™ product will constitute acceptance of the License Agreement.**

[CLICK] on the radio button next to <I AGREE>, then [CLICK] on <NEXT>.

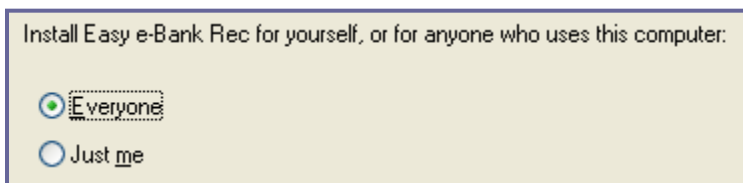
3. In the **Select Installation Folder** window, **make sure the install folder is the DexToNet subfolder under Microsoft Dynamics™ GP**. If it is not, [CLICK] on <BROWSE> to find the **DexToNet** folder. If the **DexToNet** designation does not appear in the folder path, make sure you enter it. A typical path in version 10.0 is:

ProgramFiles\MicrosoftDynamics\GP\DexToNet.



Setup Installation Folder

Depending on whether there will be one or more users on the installation computer, [CLICK] on the radio button next to <EVERYONE> (recommended) or <JUST ME>, then [CLICK] on <NEXT>.



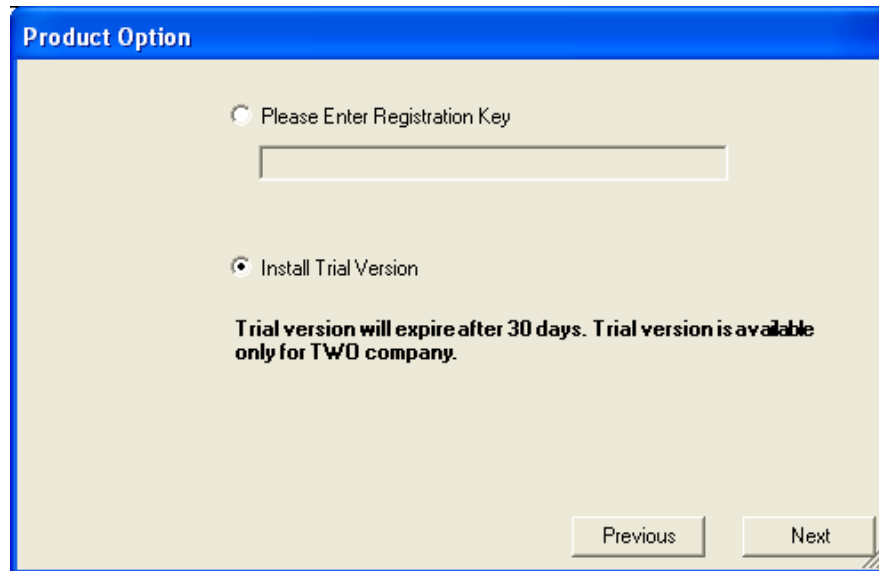
Setup Installation Folder 2

4. In the next window, you will be prompted to **Confirm the Installation**. [CLICK] on <NEXT> to start the installation.
5. In the **Product Option** window, you must enter the **Registration Key** to install Easy e-Bank Rec™ on your company database. **If you do not have your registration key, contact BTP Technologies. at (703) 760-9700 or info@btptek.com to obtain it.**

[ENTER] the **Registration Key**, then [CLICK] on <NEXT>.

If you are installing the **trial version** of Easy e-Bank Rec™, [CLICK] the <INSTALL TRIAL VERSION> radio button. **No Registration Key is required for the trial version. It will expire after 30 days. Note that the trial version works only with the TWO Company.**

[CLICK] on <NEXT>.

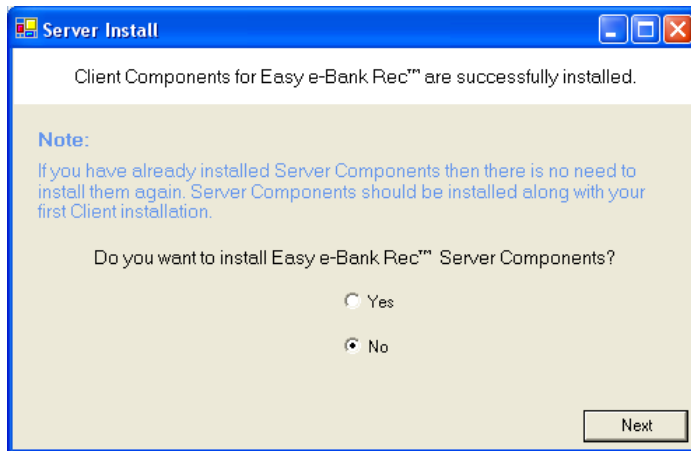


Setup Product Option

6. **Server Components** will be installed in the next window. **This is a one-time only installation.** [CLICK] on the <YES> radio button to install the components on the SQL server. **Note:** this process installs all the tables for Easy e-Bank Rec™ in each Dynamics GP company that you designate.

Take note for subsequent installation on other client workstations you **do not** install the server components again.

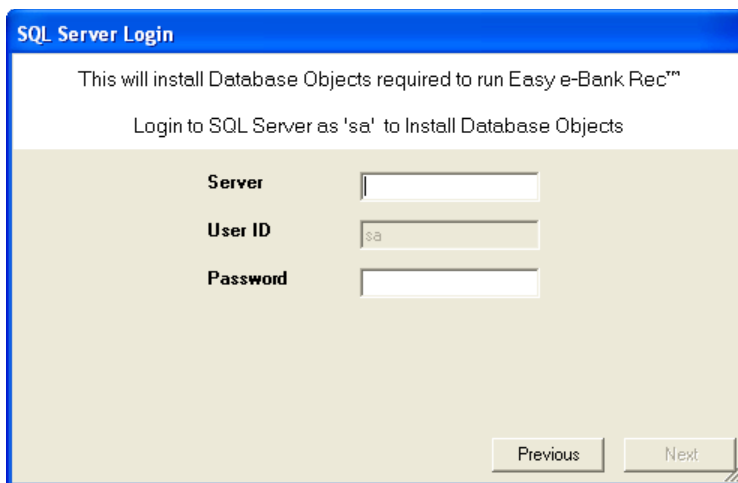
If you are installing an additional client on a new workstation **do not** install the server components.



Server Install Screen

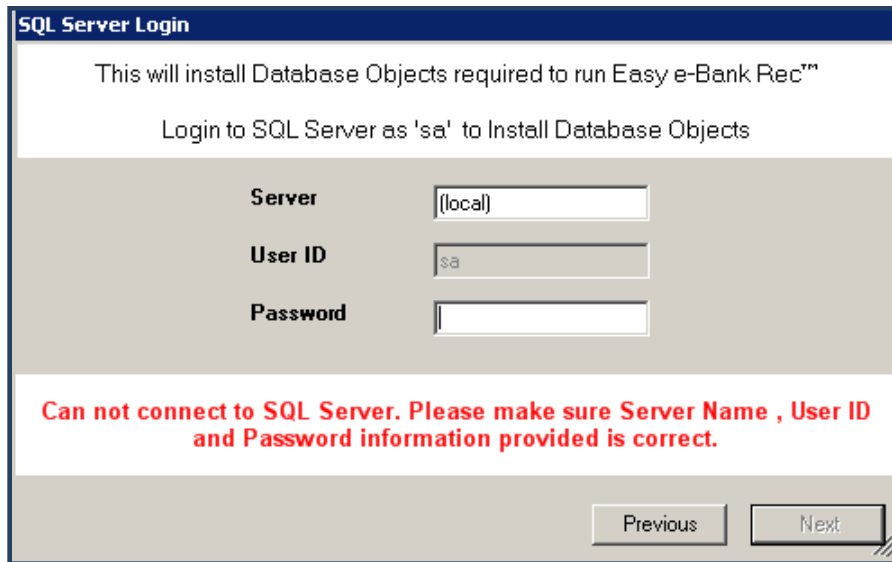
NOTE: SKIP STEP 7 IF YOU ARE UPGRADING OR PERFORMING A CLIENT INSTALLATION AND PROCEED TO STEP 10.

7. In the next window you must identify the SQL Server to be used for the Easy e-Bank Rec™ installation. [ENTER] the SQL Server name in the <SERVER> field. In the <USER ID> field, [ENTER] “sa” (System Administrator) and the System Administrator password in the <PASSWORD> field.



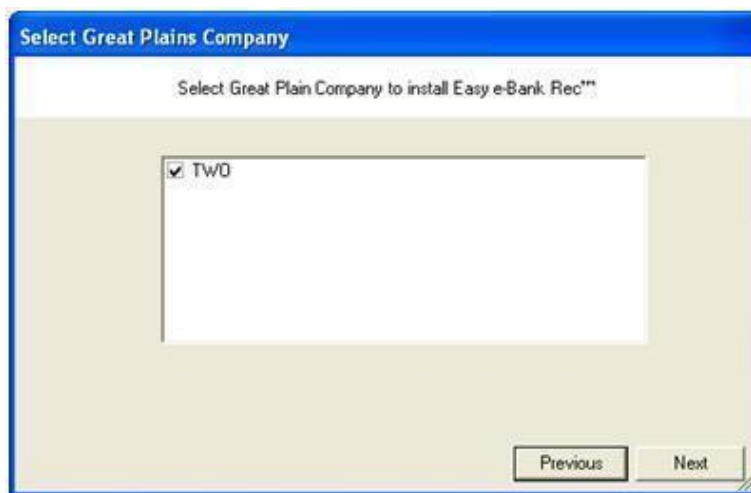
Setup SQL Server Login

On the local server you should do as follows: [Enter] the Server, User ID and Password:



NOTE: SKIP STEP 8 IF YOU ARE UPGRADING OR PERFORMING A CLIENT INSTALLATION AND PROCEED TO STEP 10.

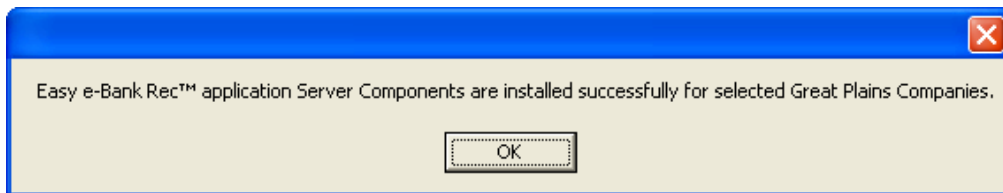
8. In the **Select Microsoft Dynamics™ GP Company** window, [**SELECT**] the appropriate Microsoft Dynamics™ GP company for the Easy e-Bank Rec™ installation, then [**CLICK**] on <**NEXT**>. If you are installing the Easy e-Bank Rec™ **Trial Version**, only the **TWO** company will appear in this window. [**CLICK**] on <**NEXT**>.



Set up Select Great Plains Company

NOTE: SKIP STEP 9 IF YOU ARE PERFORMING A CLIENT INSTALLATION ONLY AND PROCEED TO STEP 10.

- It may take several minutes to install the server components, depending on the number of companies you have selected. After the application has been installed, you will receive a confirmation:



Setup Server Components Confirmation

[CLICK] on <OK>.

- If you have installed the Easy e-Bank Rec™ **Trial Version**, the following **Read Me** window will appear on your screen. Read, and [CLICK] on <FINISH> to complete the installation.



Setup Read Me!

NOTE: Once the Easy e-Bank Rec™ components have been installed on the server, **for future workstation installations**, [ACCEPT] the <NO> default option.

NOTE: If you have upgraded Easy e-Bank Rec™ from version 9.0 to version 10.0, you must install the Easy e-Bank Rec™ client components on each user workstation.

Setup will finish and you will receive a confirmation that the Setup was successful.

Start Microsoft Dynamics™ GP and answer **YES** when prompted to install the chunk file. The new code will be included in the dictionary.

You are now ready to begin using Easy e-Bank Rec™.

Known defect!

NOTE: If the <ADDITIONAL> menu does not appear in the main Dynamics GP window after installing the Easy e-Bank Rec™ runtime, the main GP toolbar should be reset according to the following:

1. [CLICK] the <LAYOUT> button near the top right side of the main GP window (next to the **HELP** button).
2. [SELECT] <TOOLBARS\CUSTOMIZE> from the menu.
3. [SELECT] <MAIN> from the drop-down menu.
4. [CLICK] the <RESET TOOLBAR> button on the <TOOLBAR CUSTOMIZATION> window.
5. The <ADDITIONAL> option should appear.

[RESTART] Dynamics GP, if necessary



NOTE: In order for Easy e-Bank Rec to post to the accounting system, ensure the company corporate address record is entered properly: Tools → Setup → Company.

Upgrade Installation of the Easy e-Bank Rec™ Software

Before beginning the upgrade process:

1. Please make sure that you have a good backup of the SQL server databases and the GP installation directory. This is a precautionary step to ensure quick restoration in case the upgrade has to be rolled back.
2. **Uninstall Easy e-Bank Rec from Add/Remove programs in Control Panel** from all the client machines/servers on which it was installed. Please note that data tables are not dropped during this process.
3. Download the Upgrade version of Easy e-Bank Rec from BTP Technologies FTP site listed below. After signing into the FTP site, navigate to the Upgrade folder and under that you will find "**Version 11.0**" folder. Download the setup file "EasyEBankRec11Upgrade.exe" from this location.

Make sure you go the UPGRADE directory first, then to the 11.0 directory

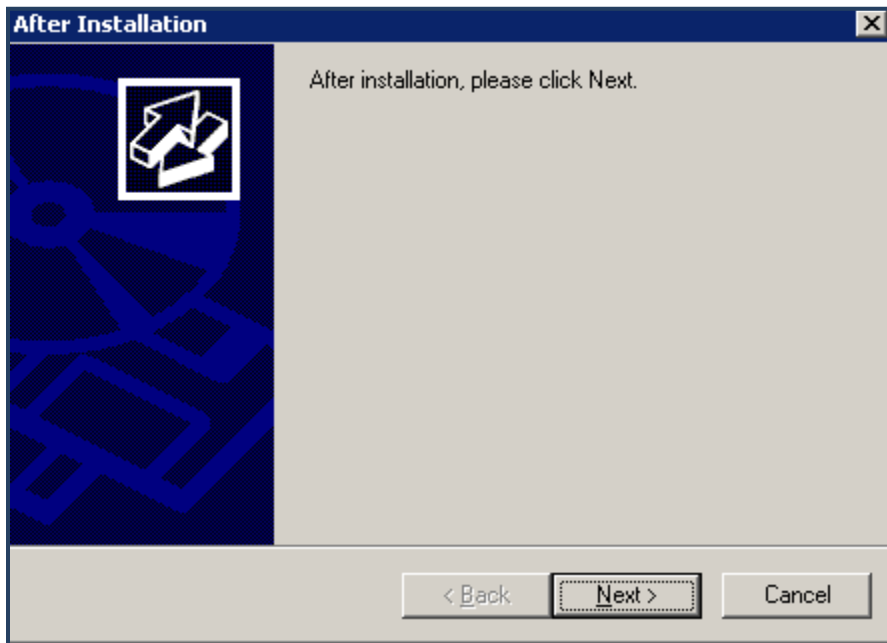
FTP Address: ftp.easyebankrec.com

User: EBANKREC

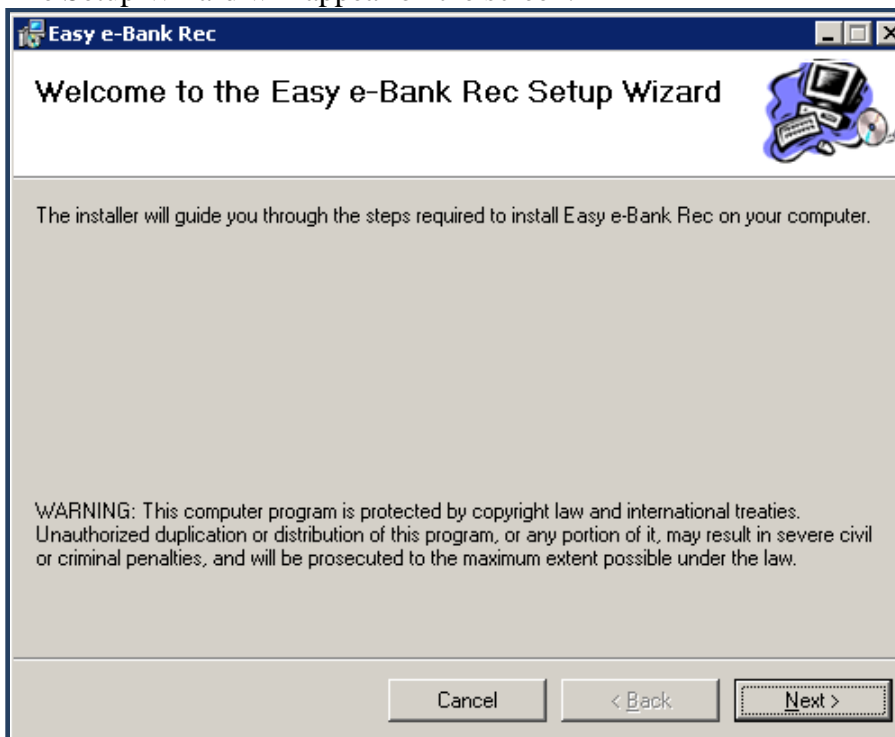
PW: fixyour\$

Upgrade Process:

1. For each client, make sure you uninstalled the Easy e-Bank Rec client via the control panel.
2. Log in with Administrator privileges onto the machine where Easy e-Bank was previously installed.
3. Run the setup and follow the on screen instructions.
4. After installation,[CLICK] on <NEXT>.

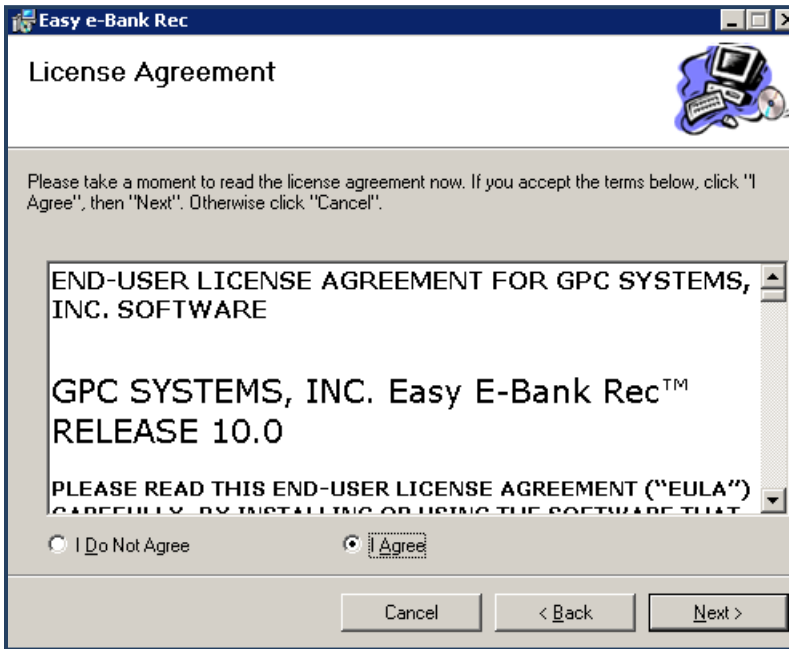


The Setup Wizard will appear on the screen:

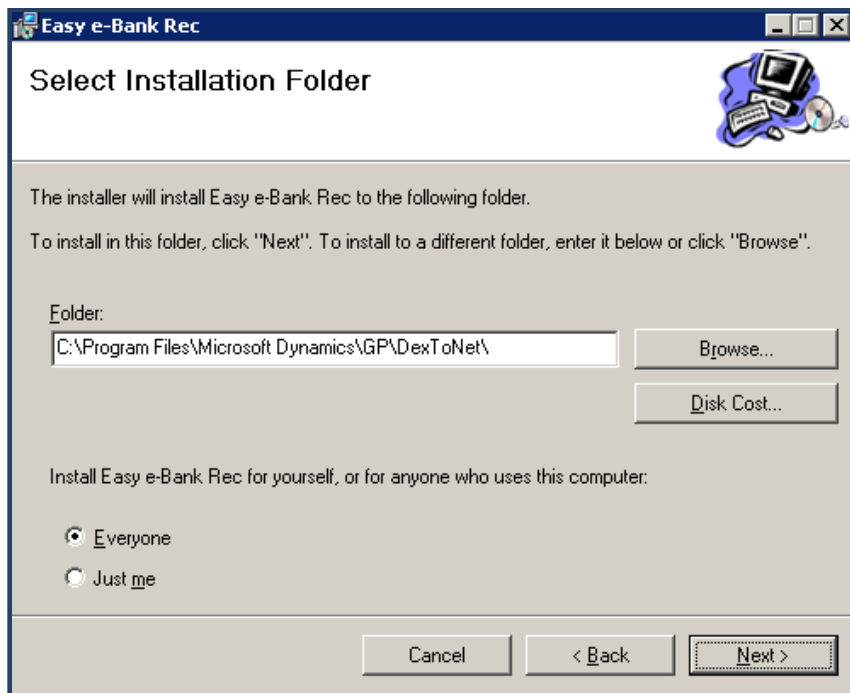


5. [CLICK] ON <NEXT>.

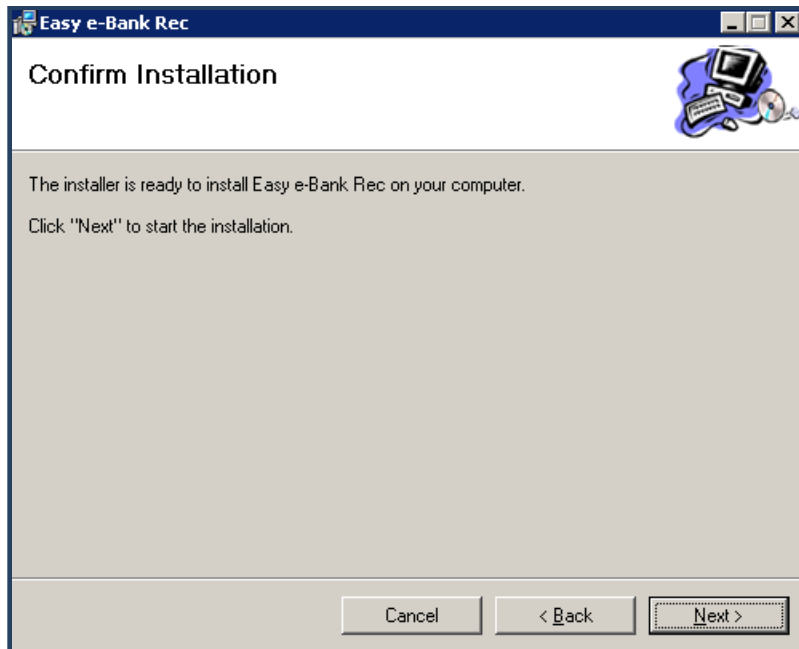
You will be asked to review the License Agreement in the next window.



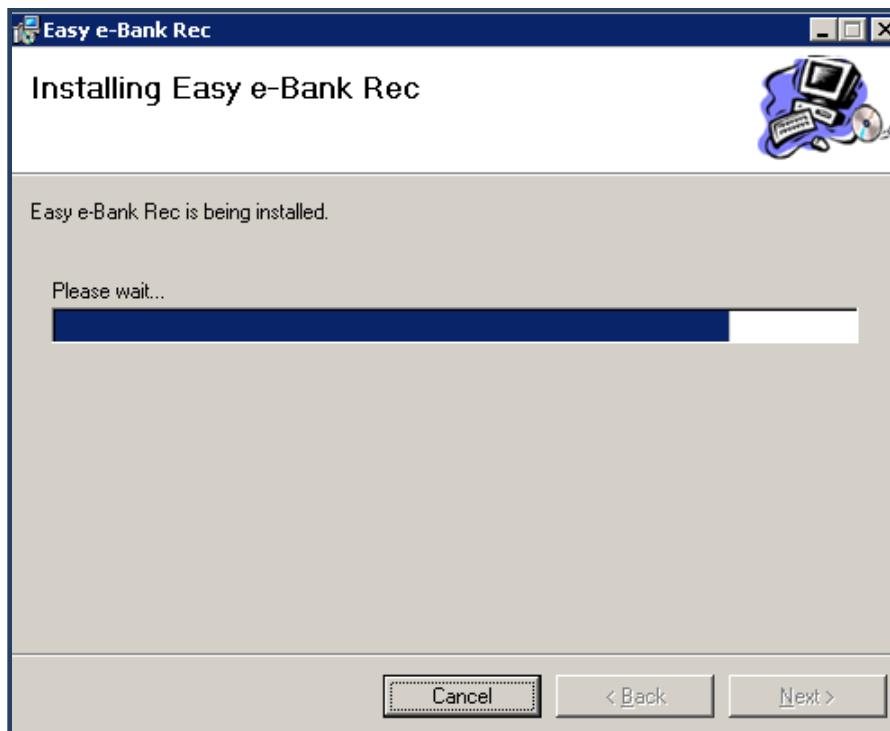
6. [CLICK] on <NEXT> to proceed. You will select the installation folder in the next window:



7. [CLICK] on <NEXT> to proceed. You will be asked to confirm the installation in the next window. [CLICK] on <NEXT> to proceed.



A notice will appear on the screen indicating that Easy e-Bank Rec is installing:



IMPORTANT NOTE

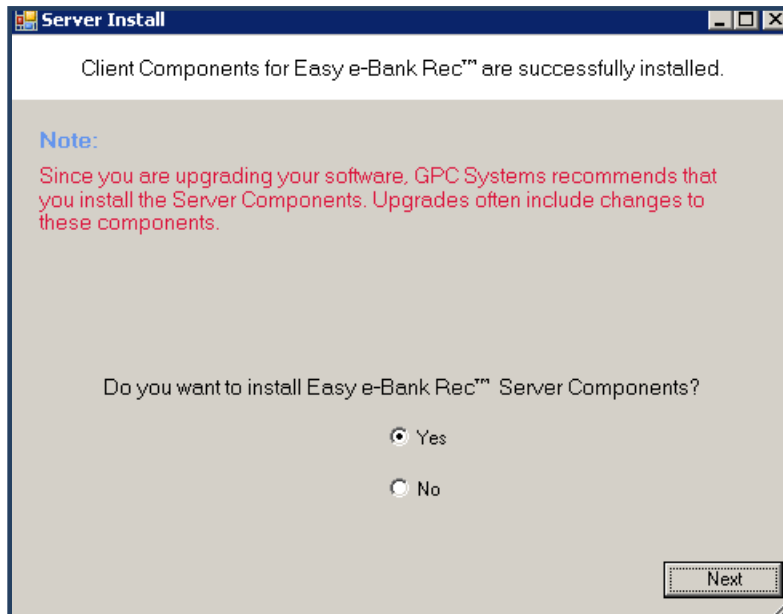
The next screen will **UPDATE** the server components. This means the stored procedures, tables and functions stored in each company will be updated with the current code and proper permissions assigned. You must update the server components at least once. If you have 10 workstations and one server, the server components need to be installed only once. In the subsequent installs, you can answer 'No' to installing the server components.

8. When installing the upgraded version, [CLICK] on <YES> when asked to install database components and [CLICK] on <OK> if prompted about any data loss (This procedure will update the SQL stored procedures and not delete any data. It needs to be performed only once, as it updates the server database).

NOTE: This procedure updates the databases with the current stored procedures and does not alter any data. If this is a first install on a particular database (company) where Easy e-Bank Rec was not installed previously, it will fail.

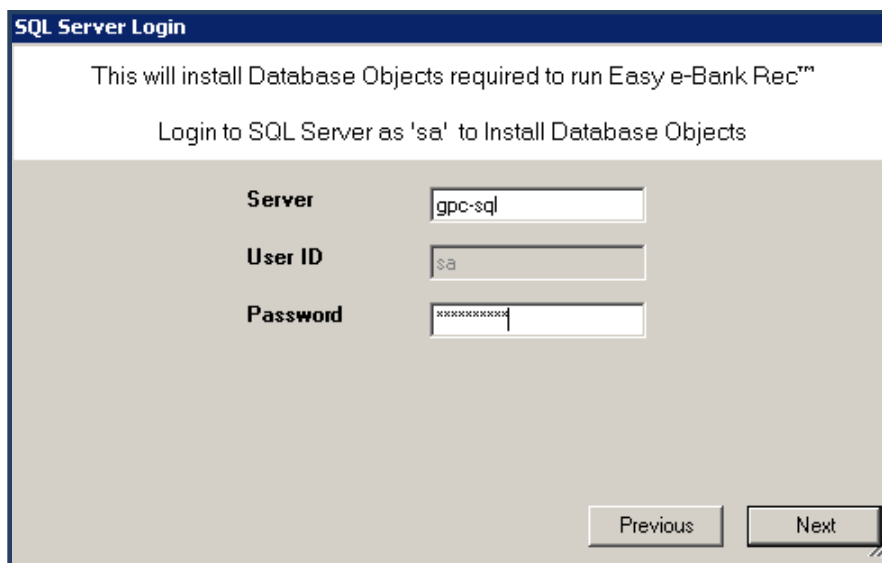
On additional client installs (other workstations that have Easy e-Bank Rec installed): [CLICK] on <NO> when asked about installing Server / Database components. **Please note** that you must install only the Upgrade Version of Easy e-Bank Rec (listed above) to retain the data from previous reconciliations and the setup must be run on every client machine on which the application was previously installed.

Upgrading the server components only needs to happen once. [CLICK] on <YES>, then [CLICK] on <NEXT> to proceed.



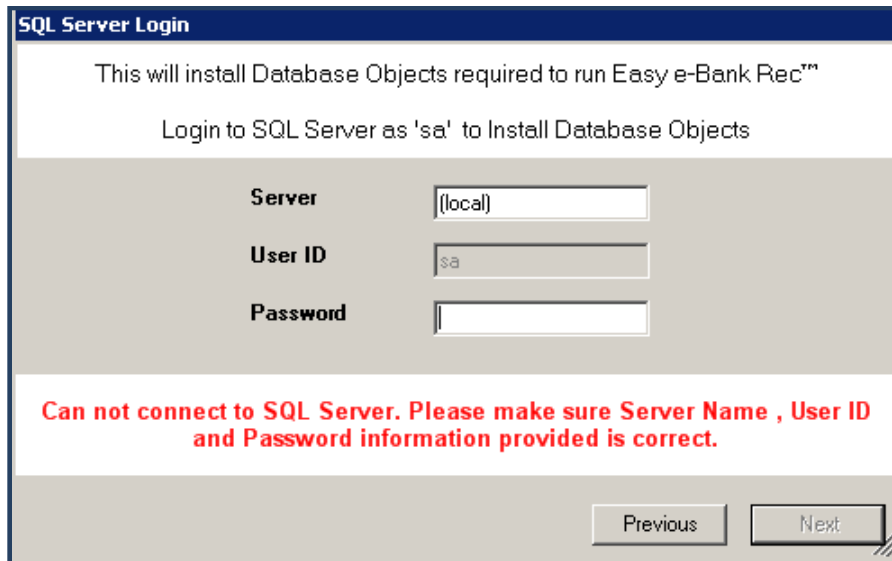
The red text denotes the fact you are performing an ‘UPGRADE’. If the red text is not present, halt the install as the server components will erase the setup in the Easy e-Bank Rec data.

9. [CLICK] on <YES> if you are upgrading.



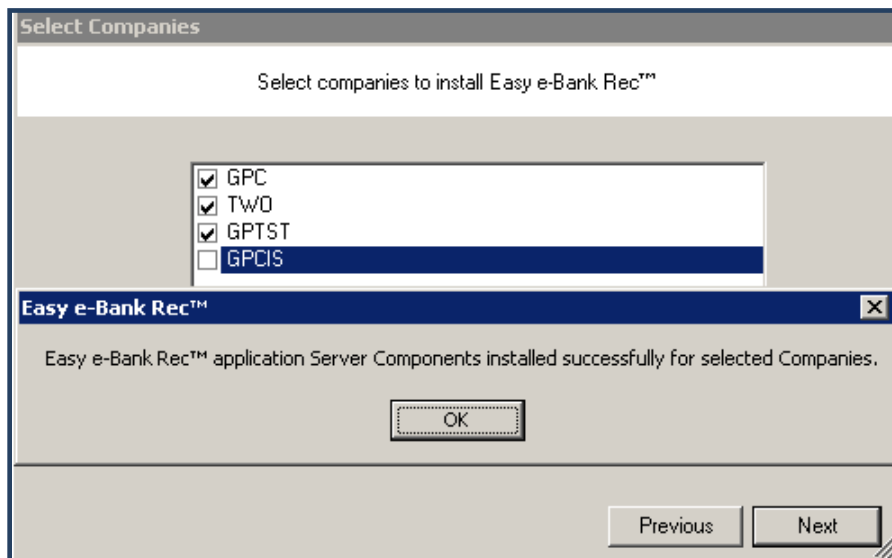
10. [CLICK] on <NEXT> to proceed.

11. On the local server you should do as follows: [Enter] the Server, User ID and Password:

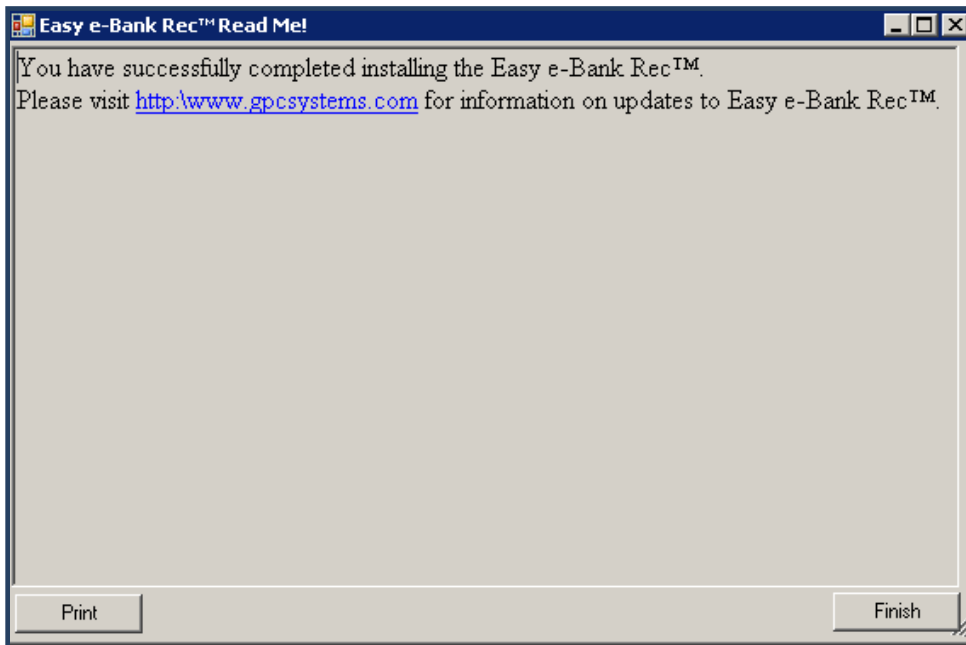


If you could not connect, the red text means you have either the wrong password or connection.

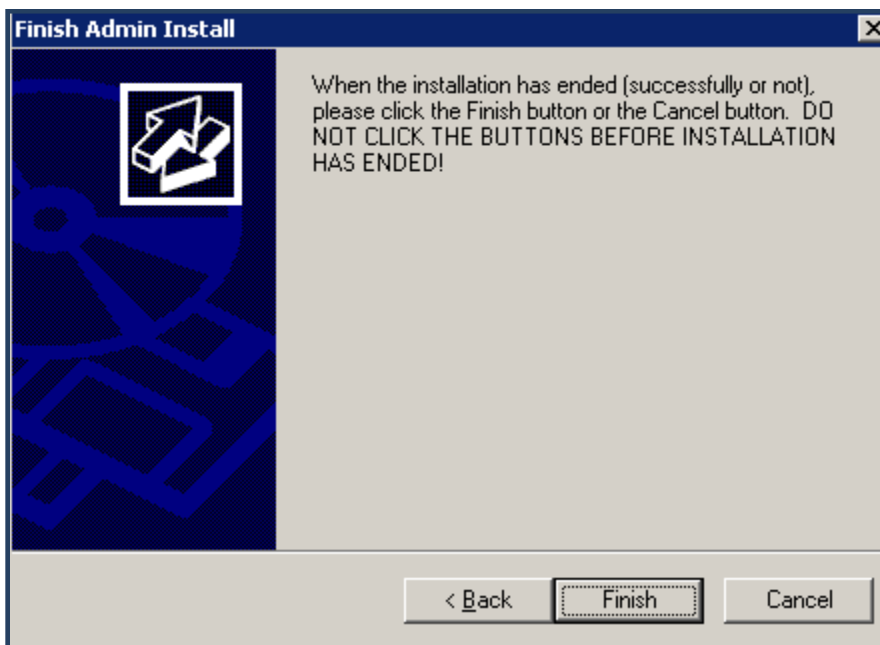
12. [SELECT] the companies you wish to upgrade. If you are not sure, select them all. You will be warned if Easy e-Bank Rec is not installed in one of them.



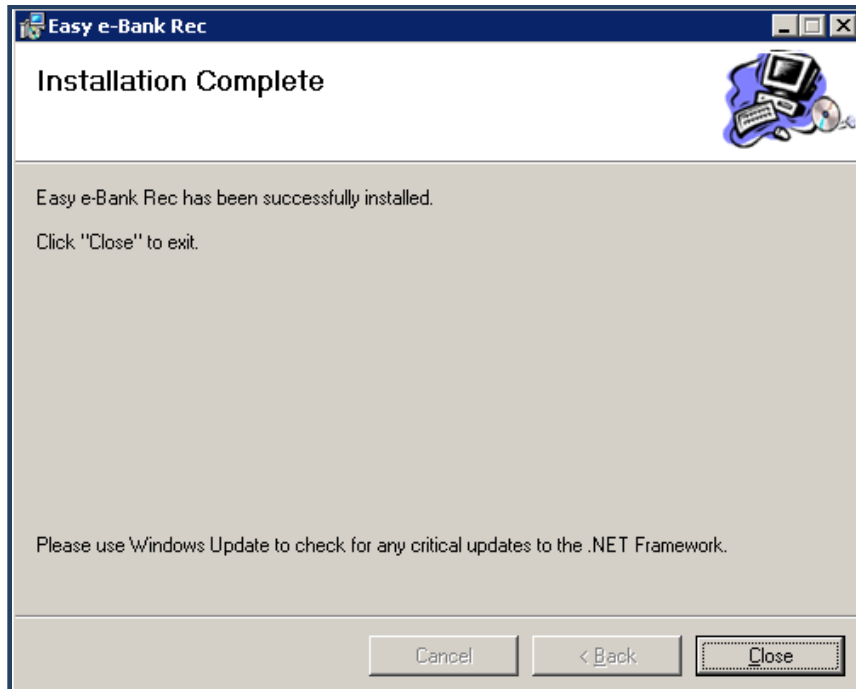
13. [CLICK] on <OK> to proceed. You will receive the following notice that the installation was completed successfully. [CLICK] on <FINISH>.



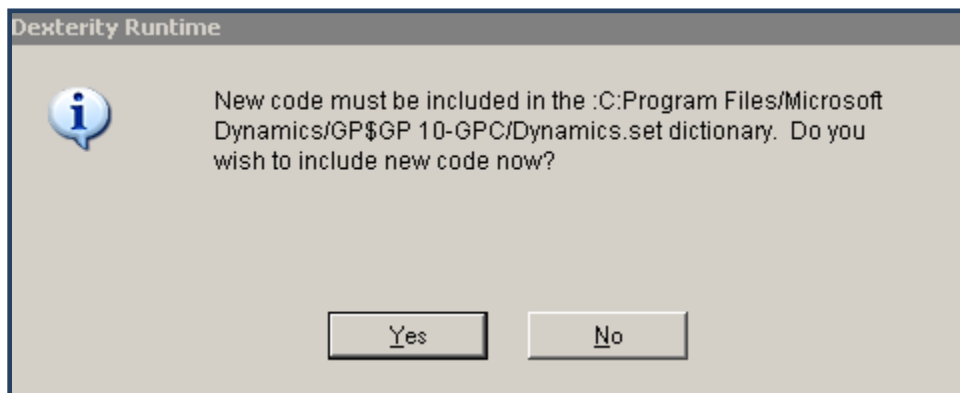
14. [CLICK] on <FINISH> to complete the installation process.



The following message will appear on the screen notifying you that the installation is complete:



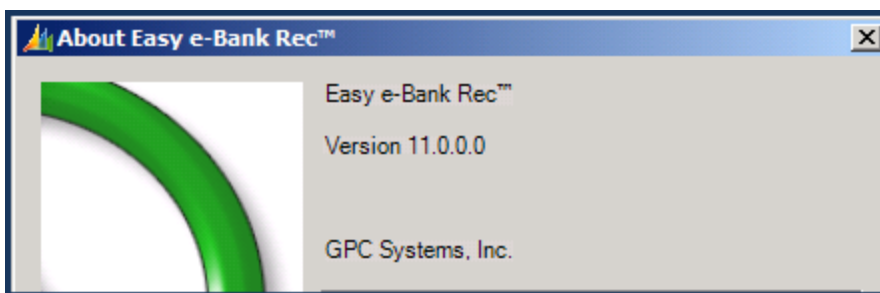
15. After installing the upgrade version of Easy e-Bank Rec, the first time you access Dynamics GP, you will be prompted to install a chunk file. Please make sure that you have sufficient permissions on the machine to be able to install the file. Then **[CLICK]** on **<YES>**.



16. **[LAUNCH]** Easy e-Bank Rec:



You can verify the version by clicking the <ABOUT> button in the main grid (Additional → Easy e-Bank Rec → About):



17. After logging into Dynamics GP, you will find Easy e-Bank Rec under the Additional Menu on the Main toolbar. Navigate to the Setup and Maintenance screen to confirm that pervious settings are still there.

Known Issues – FAQ

1. No additional menu

If the "Additional" menu doesn't appear in the main Dynamics GP window after installing the upgrade, then the main GP toolbar should be reset by doing the following:

- a. [CLICK] the <LAYOUT> button near the top right side of the main The GP window is next to the <HELP> button.
- b. [SELECT] <TOOLBARS\CUSTOMIZE..> from the menu.
- c. [SELECT] <MAIN> from the drop down menu.
- d. [CLICK] the <RESET TOOLBAR> button on the <TOOLBAR CUSTOMIZATION> window.
- e. The **Additional** option should appear on the Tool Bar.

f. **[RESTART]** Dynamics GP.

2. **No prompt when you start Dynamics GP.**

Search for a .CNK file on your workstation and move it to the main Dynamics GP directory.

3. **You are being prompted for the registration key**

If after entering the registration key you are prompted for the registration key, it means you do not have permission to write to the registry. Make sure you logged in as an administrator on the workstation.

4. **Easy e-Bank Rec menu option is not showing under the additional menu**

Solution 1: The BANKRec.DTN.dll is not located in the DexToNet directory. Search for the file elsewhere on your drives and move the complete directory to the DexToNet under the main GP directory.

Solution 2: The registry entries are pointing to an incorrect location. Please re-install and make sure you confirm where the DexToNet directory is installed. It should be under the main GP directory.

Implementation

Plan Ahead

BTP Technologies tests the bank files and trains customers in the use of Easy e-Bank Rec™. However, there are a number of areas where partners can be instrumental in preparing the customer for the implementation and training.

1. Setup in Easy e-Bank Rec™ requires a number of accounts:
 - a. Account to expense small bank charges (D button and Small differences, P&L account)

_____ P&L Account for D button

- b. Account to clear (Debits and Credits will be equal) for the N button (P&L or Balance Sheet)

_____ Clearing Account for N button

- c. Account to hold items processed by the bank but not recorded in Microsoft Dynamics™ GP. (Balance Sheet account)

_____ Balance Sheet Account for U button

- d. Need to determine what an acceptable limit is for write-offs within the Easy e-Bank Rec™ application. All items up to that amount can be automatically written off

\$ _____ Amount allowed to write off

- 2. The bank statement must be downloaded from the bank web site.

- 3. Easy e-Bank Rec™ supports the following bank file formats:

- a. BAI or BAI2 (recommended)
- b. Excel
- c. TAB delimited
- d. CSV delimited
- e. Custom import routine developed by BTP.

Questions to resolve before implementation and training include:

- Was the import file tested by the partner or BTP? Yes – No
- If the customer created the import, was the file tested with Fabrikam Company? Yes – No
- Are the following fields present in the import file for Excel, Tab and CSV?

Document #	Yes – No
Date processed	Yes – No
Amount Cleared	Yes – No
BAI code Optional	Yes – No

- 4. The software must be installed once on the Microsoft Dynamics™ GP server and each company in which Easy e-Bank Rec™ will be utilized must be selected. (Installing in the

TWO Company — Fabrikam — is recommended as well).

5. The software must be installed on the local client for each user of Easy e-Bank Rec™.
6. Permission is granted only to users who have access to the standard Microsoft Dynamics™ GP Bank Reconciliation Window.
7. All the Easy e-Bank Rec™ files are installed in each database chosen. They begin with BTP*.
8. Easy e-Bank Rec™ requires the use of the standard Bank Reconciliation in Microsoft Dynamics™ GP. It can be used in combination with the electronic bank reconciliation as well, although it is redundant.
9. Easy e-Bank Rec™ requires that you open the bank reconciliation and close it as you normally would in Microsoft Dynamics™ GP. Once you record the opening balance, you do **not** need to click on the transaction button. Click **SAVE** and save the balance. When all items have been reconciled, you must open up the bank reconciliation and click **RECONCILE** inside Microsoft Dynamics™ GP. Easy e-Bank Rec™ does not bypass the Microsoft Dynamics™ GP bank reconciliation process.
10. A registration key is required to install the software. The registration key is not needed if you install for Fabrikam as a Trial version.
11. Easy e-Bank Rec™ will create Increase Adjustments and Decrease Adjustments and post them.
12. The software has the ability to automate transactions recorded by the bank for a specific type of transaction and create all necessary entries in accounting. These items must be set up in the maintenance window under ‘Automated Bank Transactions’.

Preparation for Training

In order to have an effective, efficient Easy e-Bank Rec™ training session, it is best to begin with a fully reconciled bank account with the following requirements:

Training Checklist for Easy e-Bank Rec™	Check Box
BAI, QIF or tab delimited or csv bank file that has been verified by BTP or partner.	<input type="checkbox"/>
The GL balance minus the Outstanding List should match the bank	<input type="checkbox"/>

statement of the same period.	
The bank download to be imported for the training session should be the next period.	<input type="checkbox"/>
If you have been using the Great Plains bank reconciliation, all items that are outstanding should be listed on the outstanding items report in the Great Plains bank reconciliation you performed last.	<input type="checkbox"/>
If you have not been using the Great Plains bank reconciliation, please have the following available:	
1. Outstanding GL balance.	<input type="checkbox"/>
2. A list of outstanding items as of the last reconciliation which includes individual documents with at least the following attributes: Document #, date, Amount	<input type="checkbox"/>
3. The outstanding balance in the GL plus or minus the list of reconciliation items must match the bank statement balance.	<input type="checkbox"/>
4. All outstanding items must be imported or keyed into the GP bank reconciliation module with their GL issuance date.	<input type="checkbox"/>
5. In order to make the bank reconciliation balance match the GL, you must make an adjustment entry in the bank reconciliation module without affecting the GL. Once the outstanding list is accurate, this amount will be available in the reconciliation summary print-out in Great Plains.	<input type="checkbox"/>

Partners should ensure that the customer meets the requirements outlined in the checklist above.

TRAINING

Training is performed in a live online session by BTP Technologies. The following criteria are essential:

1. Obtain the download from bank for the month to be reconciled.
2. Schedule the online training session.
3. Include the customer users who are responsible for reconciling the bank statements.
4. Ascertain that the GL to Bank Statement is available from the prior month.
5. Recreate the prior month reconciliation inside if Microsoft Dynamics™ GP for the prior month if Microsoft Dynamics™ GP was not used before the planned reconciliation.

Training sessions take approximately two hours and consists of the following:

1. Setup of the defaults and maintenance window.
2. Review of the features of Easy e-Bank Rec™.
3. Performance of the bank reconciliation.

Operational Checklist

There are no daily, monthly or annual procedures that must be followed for Easy e-Bank Rec™. The application resides within the Dynamics database and is backed up when Microsoft Dynamics™ GP and the respective companies are backed up.

Upgrades

Upgraded versions of the software are posted on www.easybankrec.com and are downloaded and installed in the same manner as the original version by the customer or partner.

Bank File Requirements

Easy e-Bank Rec™ currently supports the BAI and BAI2 bank statement electronic files (http://www.x9.org/standards/free/X9_BAI_Codes_Version_2_Cash_Management_Balance_Reporting..pdf or <http://www.x9.org>).

The BAI File format is the preferred method. Depending on your bank's implementation of the BAI standard, it can include all of your bank accounts in a single download. This makes it easy, as you only have to perform one import from the bank. By the way, Easy e-Bank Rec™ will match the BAI file bank account number with the bank account number field in the Checkbook Maintenance screen in Microsoft Dynamics GP.

Version 10.0 of Easy e-Bank Rec™ also provides the option to set up your own import with CSV, TAB, or an Excel file with the following fields:

- Only one header
- BAI code (preferred, but optional)
- Check Number, Deposit Number, Document Number
- Check Date
- Document Clearing Date
- Amount Cleared
- Account Number

When necessary, BTP Technologies can also build a custom import for a small fee.

BAI File - Technical Considerations

1. A BAI file is often available in the download section of the online bank account software from your bank.
 - a. You can usually obtain daily, weekly or monthly files.
2. BAI specification information is available at:
 ([http://www.x9.org/standards/free/X9 BAI Codes Version 2 Cash Management Balance Reporting.pdf](http://www.x9.org/standards/free/X9_BAI_Codes_Version_2_Cash_Management_Balance_Reporting.pdf) or <http://www.x9.org>).

Note: These are voluntary specification and banks have interpreted them differently

3. BAI files **do not** require any mapping; they can be imported natively. The format will look as follows:

```
01,HSBC,USGAS169743623,100927,1828,1,80,1,2/
02,USGUS123443623,HSBC,1,100104,,,2/
03,799873106,USD,010,0,,/
```

4. In order to test your import, you can select the Standard BAI Format from the Easy e-Bank Rec Select File Format drop-down (Tool Bar → Actions → Import Bank File → Select File Format) which will read your native BAI file.
5. File extensions for the recognized BAI files are .bai .bai2 or .txt
6. The bank account number must be matching between the file to be imported and the accounting system:

Open the BAI file and look for an 03, record. The next field will be the account number, e.g. 03,**787033206**,USD,010,0,,/

Open the Check Book Maintenance Window (Financial → Cards → CheckBook) and insert the same number in the window under the field **Account Number**.

The screenshot shows a software window titled "Checkbook Maintenance" with a menu bar (File, Edit, Tools, Additional, Help) and a toolbar (Save, Clear, Delete). The main area contains several input fields:

Checkbook ID	WAH00S		
Description	Wahoos		
<u>Currency ID</u>	Z-US\$		
<u>Payment Rate Type ID</u>			
<u>Deposit Rate Type ID</u>			
Cash Account	000 -1130 -00		
Next Check Number	00000000000000000001		
Next Deposit Number	00000000000000000001		
<u>Company Address ID</u>			
Bank Account	787033206		
<u>Bank ID</u>			
User-Defined 1			
User-Defined 2			

Technical Considerations – What Happens at Installation

What does the install really do from a technical perspective?

Client

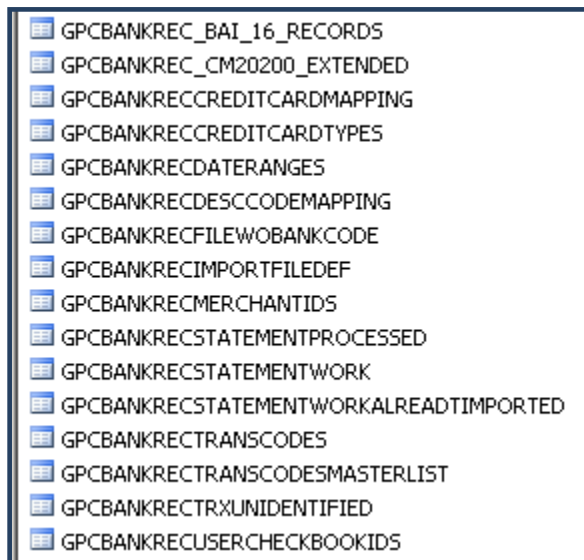
1. Installs DexToNet Additional menu in Dynamics GP.
2. The CNK file will be dropped in main Dynamics GP directory to be executed at the next launch of GP.
3. Creates a DexToNet directory.
4. The directory will be filled with the following files:

Name	Size	Type	Date Modified
BANC_CODES_MASTER.TXT	23 KB	Text Document	10/2/2007 1:29 PM
Bank.mac	1,341 KB	MAC File	10/2/2007 1:29 PM
BankRec.DTN.dll	1,136 KB	Application Extension	10/4/2010 7:43 PM
BankRec.DTN.old	1,136 KB	OLD File	6/20/2010 11:57 PM
BankRecOnlineHelp.chm	35 KB	Compiled HTML Help...	10/2/2007 1:29 PM
BankRecSetupCustomAction.exe	92 KB	Application	10/4/2010 7:43 PM
BankRecStatementImport.dll	100 KB	Application Extension	10/4/2010 7:43 PM
BankRecStatementImport.old	72 KB	OLD File	6/20/2010 11:57 PM
bcp.exe	95 KB	Application	7/10/2008 3:55 AM
bcp.rll	19 KB	RLL File	7/10/2008 4:40 AM
Copy of BankRecSetupCustomAction....	92 KB	Application	8/19/2010 11:28 AM
DataObjectsScriptCreate.sql	480 KB	Microsoft SQL Serv...	10/4/2010 7:34 PM
DexToNETFx.exe	278 KB	Application	6/24/2008 5:11 PM
DexToNETSDKUninstall.exe	48 KB	Application	6/17/2008 5:53 PM
EncoreBusiness.DexToNET.dll	244 KB	Application Extension	7/30/2007 8:12 PM
EncoreBusiness.DexToNET.Interface.dll	44 KB	Application Extension	7/30/2007 8:10 PM
EncoreBusiness.DexToNET.Interface.tlb	13 KB	TLB File	4/22/2008 12:15 PM
Encryption.dll	16 KB	Application Extension	10/2/2007 1:29 PM
GPC_Bank_Statement_050131.txt	49 KB	Text Document	10/2/2007 1:29 PM
Help.htm	21 KB	HTML Document	10/2/2007 1:29 PM
Infragistics.Excel.v4.3.dll	104 KB	Application Extension	10/2/2007 12:36 PM
Infragistics.Shared.v4.3.dll	232 KB	Application Extension	10/5/2004 11:53 AM
Infragistics.Win.Misc.v4.3.dll	148 KB	Application Extension	10/5/2004 12:04 PM
Infragistics.Win.UltraWinDataSource....	96 KB	Application Extension	10/2/2007 12:36 PM
Infragistics.Win.UltraWinEditors.v4.3.dll	348 KB	Application Extension	10/5/2004 12:09 PM
Infragistics.Win.UltraWinGrid.ExcelEx...	60 KB	Application Extension	10/5/2004 12:18 PM
Infragistics.Win.UltraWinGrid.v4.3.dll	1,412 KB	Application Extension	10/5/2004 12:14 PM
Infragistics.Win.UltraWinSchedule.v4....	1,428 KB	Application Extension	10/5/2004 12:23 PM
Infragistics.Win.UltraWinTabControl.v...	212 KB	Application Extension	10/5/2004 12:11 PM
Infragistics.Win.UltraWinToolbars.v4....	1,144 KB	Application Extension	10/5/2004 12:08 PM
Infragistics.Win.v4.3.dll	1,724 KB	Application Extension	10/2/2007 12:36 PM
InstallClass.dll	16 KB	Application Extension	10/4/2010 7:43 PM
Support.txt	839 KB	Text Document	8/25/2010 10:16 AM
supportCreate.txt	977 KB	Text Document	10/4/2010 7:34 PM

The BankRec.DTN.dll is the main program and will be launched when you click on the main toolbar - Additional → Easy e-Bank Rec inside Dynamics GP.

Server

1. The server installation routine will create tables all starting with
 - a. GPCBANKREC



- b. 1 table starting with APPLICATION....
 - c. Stored procedures starting with BANK_REC... or PR_...
 - d. Functions
2. All tables will be given permissions to the DYNGRP and stored procedures execute to the DYNGRP.

Latest Upgrade Notes

Easy e-Bank Rec Version 11.0 Upgrade Release Notes

1. Ability to match one-to-many, many-to-many, and many-to-one transactions.
2. Multi-location and multi-credit card electronic wire/ACH reconciliation with the ability to sort, view, and limit the view for a particular site, which provides a micro “location” view/reconciliation within a checkbook ID.
 - Custom import automatically extracts the Merchant ID from the bank statement. (The fee for the custom import will be determined by the Scope of Work).
 - Automatically extracts “Location” and “Transaction Type” from the accounting bank reconciliation transaction.
 - Provides a mapping table for Location, Transaction Type, and Internal ID (merchant ID) that cross references both the accounting and bank statement transactions to produce a Location and Internal ID common to both.
 - Right-clicking on Location or Internal ID provides a view of a single location or Internal ID within a master bank account.
 - Automated matching occurs only within the location. The system prevents the matching of like amounts across locations when Location or ID is present.
3. The Preview Update Deposit # and Preview Update Check # windows contain a number of new features:
 - It is possible to de-select automatic matches and manually match the transactions.
 - New color coding denotes transactions that are banked beyond the allowable range, and those that are banked before they have been recorded in the GL.
 - The transaction description has been added to the grid.
 - The Payer/Payee descriptions have been added to the Check Management (Dynamics GP) side of the grid.
 - The number of days between booked and banked transactions is displayed.
4. A Notes button has been added to Preview Automated Bank Transactions. In this window, the user can change the non-cash account, which will override the default setting for that particular transaction. In other words, the user can override the automated transaction distribution. The full bank statement additional detail is available for viewing.
5. Any issued or banked amount on the grid can be right-clicked to display all the transactions of the same amount on both the Check Management and Bank Statement sides of the grid. The window displays all the items for that amount that have been matched, and those that have not yet been matched.

6. A new column in the main grid called “Pstd/Clrd” contains the date issued (accounting) or the bank cleared date, thus providing the ability to sort all transactions (accounting and bank) in date order.
7. Ability to create a deposit on the fly with any un-deposited Cash Receipts with filtering capability on Cash, Checks or Credit Cards types. (Cash receipts are in the GL but not in the bank reconciliation because the deposit was not created).
8. The speed issue with large Chart of Accounts affecting the N, D, and U drill-down buttons has been resolved.
9. D button screen allows the user to override the default “D” account and book the opposite of cash where required.
10. The full description available in the bank statement download with Automated Bank Transactions is now stored in the yellow sticky note in GP with Automated Bank Transactions.
11. A “Clear Filters” button has been added to clear all grid filters at once.
12. The most recent import can be deleted by the end user and the file can be re-imported.
13. The GP Bank Transaction Entry window can be launched from within Easy e-Bank Rec. Click on the transaction drill-down button and click on the far-right button under column “BR” to launch the window. It will be populated automatically with the data to be booked into GP.
14. Under the Maintenance menu, you can select a Checkbook ID and automate the first four steps of Easy e-Bank Rec: Import, Match Deposits, Match Checks, Process Automated Bank Transactions. The Automated Import function works for multiple files and Checkbook IDs.
15. The start date has been added to the grid to provide the ability to span across two fiscal periods on the AMEX statement to facilitate the reconciliation outside of the default, GP-specified fiscal periods. You can now choose a CM cut-off date of 1/22 and change the start date from 1/01 to 12/23.
16. The Manual AP records created from the Amex download now have a document # that is internally generated. The duplicate AP # issue is therefore resolved. The AMEX Reference is now stored in the comment field inside the Manual AP screen.

Service Pack Corrections

17. .Added an index on the GPCBANKSTATEMENTPROCESSED Table for performance issues with very large CM20200 and bank statement tables.
18. Changed Custom import to allow XXX, XXXX and XXXXX CK 21 records (N...T)
19. The Currency ID issue has been resolved for AMEX imported records, The CM00100 has a blank Currency ID and caused the wrong value in the AP Manual check. Multi-currency checkbook ID can now be handled with the manual AP check creation.